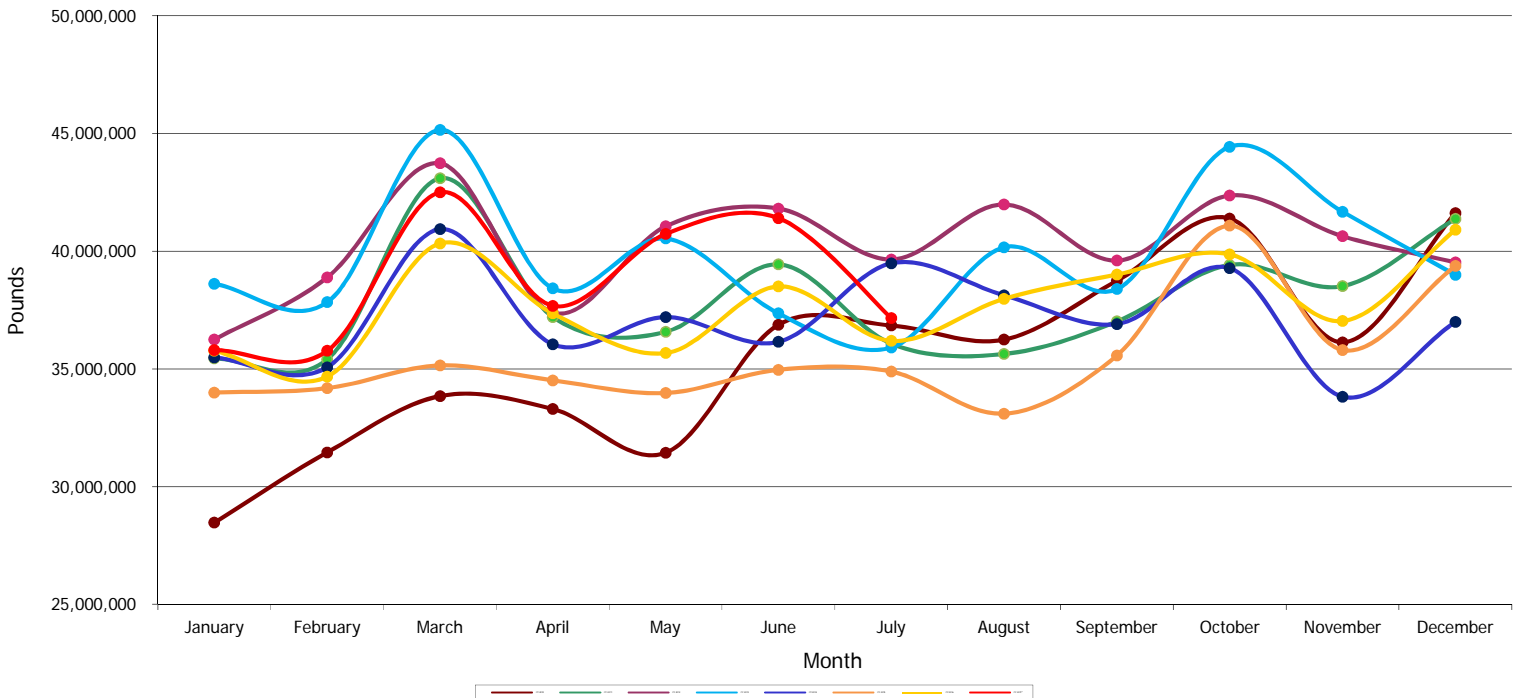




Detroit Metropolitan Airport (DTW) All Cargo by Month (by Calendar Year)

Month	CY 2010	CY 2011	CY 2012	CY 2013	CY 2014	CY 2015	CY 2016	CY 2017*
January	28,464,423	35,441,281	36,238,935	38,609,312	35,484,480	33,989,100	35,768,423	35,800,745
February	31,451,365	35,398,884	38,881,476	37,830,461	35,065,700	34,179,069	34,669,592	35,764,180
March	33,845,990	43,095,590	43,731,393	45,150,864	40,936,886	35,145,120	40,323,849	42,498,175
April	33,294,831	37,201,421	37,385,958	38,416,570	36,043,756	34,509,772	37,353,444	37,678,272
May	31,436,447	36,570,314	41,053,118	40,535,579	37,199,997	33,973,568	35,668,509	40,727,213
June	36,873,436	39,439,824	41,810,399	37,353,758	36,146,038	34,957,283	38,500,692	41,403,026
July	36,843,102	36,069,786	39,646,175	35,906,722	39,486,728	34,885,455	36,189,962	37,155,839
August	36,243,263	35,632,987	41,987,336	40,161,069	38,124,165	33,097,454	37,976,981	
September	38,744,189	37,014,036	39,598,325	38,389,115	36,900,963	35,572,180	39,008,934	
October	41,388,867	39,416,102	42,364,431	44,433,872	39,277,347	41,084,182	39,865,844	
November	36,129,742	38,513,668	40,633,169	41,673,878	33,815,586	35,800,186	37,028,391	
December	41,608,431	41,375,777	39,523,647	38,992,837	36,998,396	39,366,630	40,904,783	
Total	426,324,086	455,169,670	482,854,362	477,454,037	445,480,042	426,559,999	453,259,404	271,027,450

*Please note that 2017 Cargo is subject to change as updates are submitted by Airlines

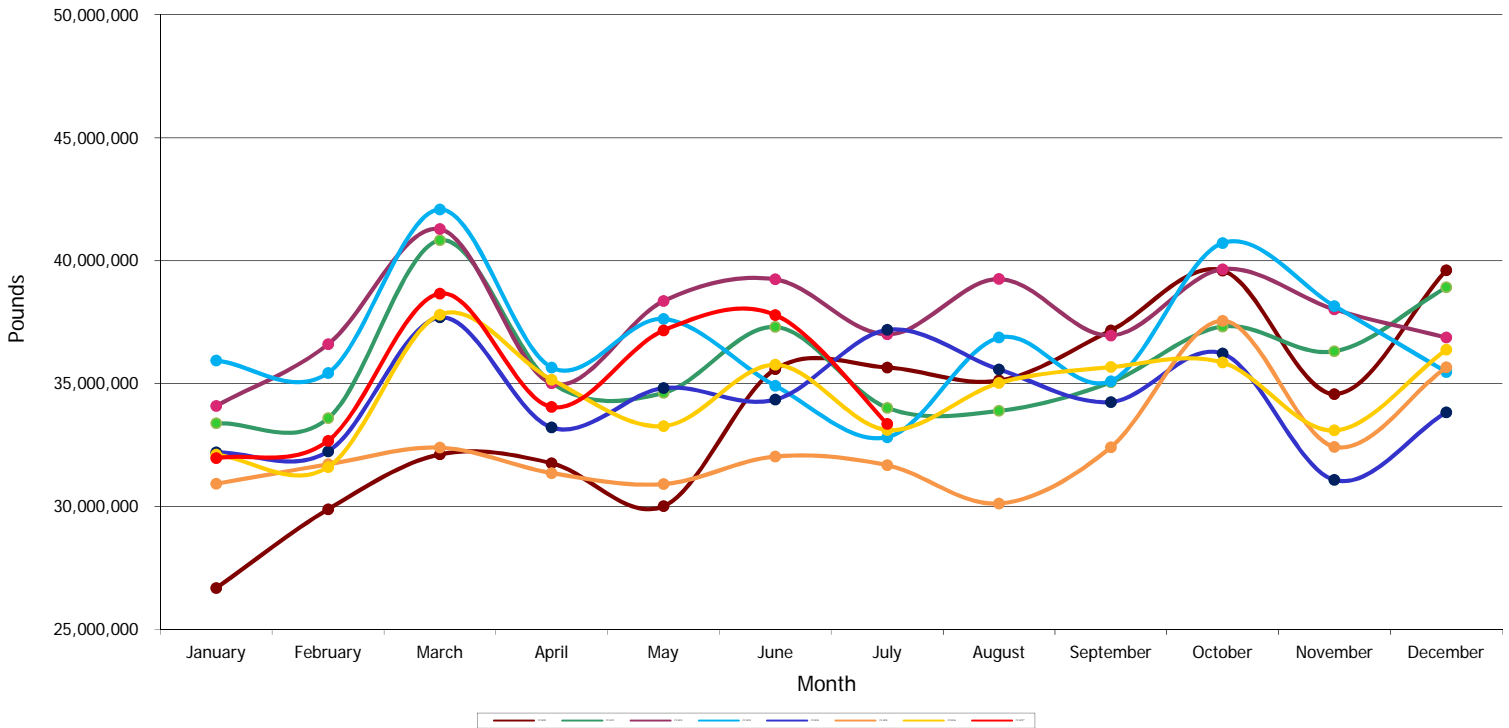




Detroit Metropolitan Airport (DTW) Air Freight By Month (by Calendar Year)

Month	CY 2010	CY 2011	CY 2012	CY 2013	CY 2014	CY 2015	CY 2016	CY 2017*
January	26,677,264	33,376,773	34,086,989	35,931,827	32,199,049	30,919,145	32,097,291	31,955,655
February	29,879,447	33,581,724	36,594,321	35,426,734	32,233,352	31,707,480	31,600,530	32,666,953
March	32,113,030	40,819,032	41,274,453	42,076,926	37,681,514	32,388,589	37,795,730	38,655,772
April	31,750,756	35,026,041	35,000,345	35,645,000	33,205,648	31,353,509	35,155,046	34,041,214
May	30,002,824	34,609,783	38,349,350	37,619,641	34,809,761	30,903,099	33,258,287	37,153,693
June	35,578,732	37,295,008	39,231,565	34,906,764	34,339,864	32,027,298	35,759,216	37,783,560
July	35,647,244	34,007,072	36,993,155	32,810,043	37,174,142	31,671,869	33,108,691	33,355,367
August	35,116,994	33,882,025	39,246,667	36,864,479	35,570,656	30,116,918	35,015,609	
September	37,156,197	35,045,128	36,945,763	35,089,612	34,244,325	32,402,870	35,664,707	
October	39,591,879	37,315,806	39,643,001	40,709,319	36,213,735	37,544,465	35,848,217	
November	34,568,032	36,304,929	38,010,604	38,149,374	31,070,124	32,421,762	33,088,414	
December	39,602,657	38,908,356	36,866,860	35,464,242	33,823,844	35,651,378	36,369,841	
Total	407,685,056	430,171,677	452,243,073	440,693,961	412,566,014	389,108,382	414,761,579	245,612,214

*Please note that 2017 Cargo is subject to change as updates are submitted by Airlines

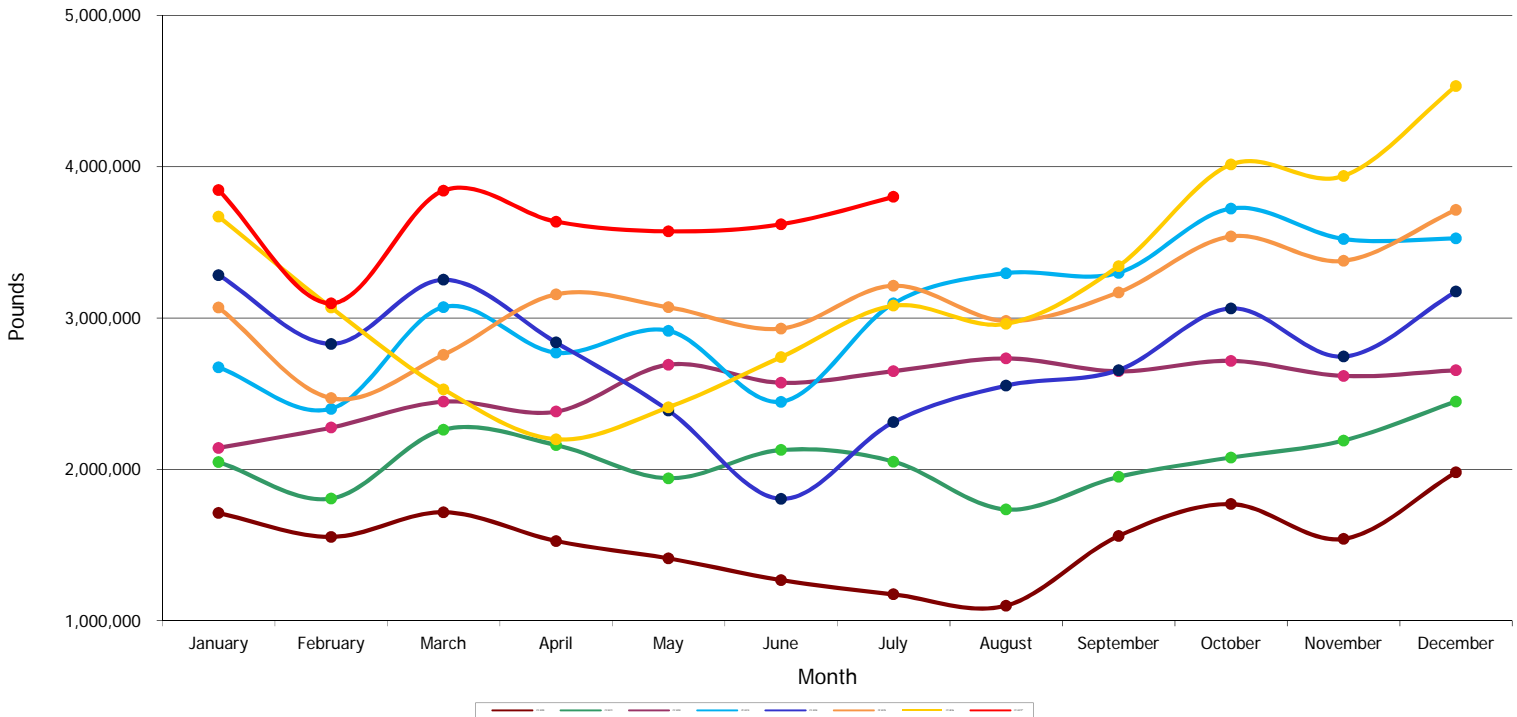




Detroit Metropolitan Airport (DTW) Air Mail by Month (by Calendar Year)

Month	CY 2010	CY 2011	CY 2012	CY 2013	CY 2014	CY 2015	CY 2016	CY 2017*
January	1,710,110	2,047,422	2,141,364	2,674,103	3,283,248	3,069,862	3,670,900	3,844,667
February	1,552,743	1,806,012	2,275,285	2,399,399	2,828,531	2,469,639	3,068,871	3,096,463
March	1,715,560	2,261,975	2,446,868	3,072,133	3,252,225	2,756,103	2,527,878	3,841,616
April	1,525,848	2,159,833	2,380,570	2,770,560	2,837,913	3,155,722	2,198,229	3,636,592
May	1,410,454	1,940,550	2,691,110	2,915,319	2,388,271	3,070,381	2,409,954	3,572,675
June	1,266,925	2,126,795	2,571,460	2,445,893	1,804,137	2,929,573	2,741,129	3,619,244
July	1,173,071	2,050,345	2,648,455	3,096,112	2,311,505	3,213,243	3,080,897	3,800,377
August	1,098,295	1,733,867	2,732,700	3,295,963	2,552,547	2,979,932	2,961,116	
September	1,558,331	1,949,529	2,647,135	3,298,273	2,655,477	3,169,113	3,343,002	
October	1,769,483	2,077,154	2,716,634	3,723,637	3,063,452	3,539,168	4,014,072	
November	1,539,509	2,189,291	2,616,519	3,522,486	2,744,639	3,377,769	3,938,445	
December	1,979,985	2,448,027	2,653,810	3,525,107	3,174,146	3,714,685	4,532,722	
Total	18,300,314	24,790,800	30,521,910	36,738,985	32,896,091	37,445,190	38,487,215	25,411,634

*Please note that 2017 Cargo is subject to change as updates are submitted by Airlines





Detroit Metropolitan Airport (DTW) Small Packages by Month (by Calendar Year)

Month	CY 2010	CY 2011	CY 2012	CY 2013	CY 2014	CY 2015	CY 2016	CY 2017*
January	77,049	17,086	10,582	3,382	2,183	93	232	423
February	19,175	11,148	11,870	4,328	3,817	1,950	191	764
March	17,400	14,583	10,072	1,805	3,147	428	241	787
April	18,227	15,547	5,043	1,010	195	541	169	466
May	23,169	19,981	12,658	619	1,965	88	268	845
June	27,779	18,021	7,374	1,101	2,037	412	347	222
July	22,787	12,369	4,565	567	1,081	343	374	95
August	27,974	17,095	7,969	627	962	604	256	
September	29,661	19,379	5,427	1,230	1,161	197	1,225	
October	27,505	23,142	4,796	916	160	549	3,555	
November	22,201	19,448	6,046	2,018	823	655	1,532	
December	25,789	19,394	2,977	3,488	406	567	2,220	
Total	338,716	207,193	89,379	21,091	17,937	6,427	10,610	3,602

*Please note that 2017 Cargo is subject to change as updates are submitted by Airlines

